



Community Care
NORTHUMBERLAND

Port Hope Workshop Schedule Fall 2024



Community Care
NORTHUMBERLAND

Join us!



1-866-514-5774



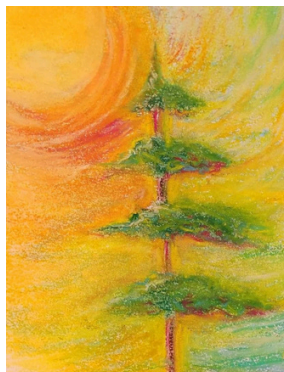
wellness@commcare.ca



www.commcare.ca

Chalk Pastel Fall Landscape

Haliburton Kawartha Pine Ridge
District Health Unit

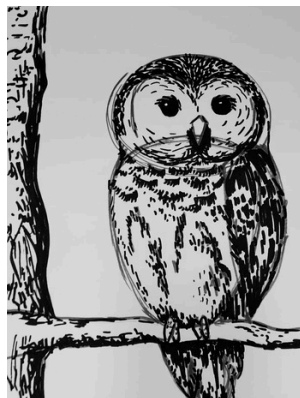


Learn to capture autumn's vibrant colours in a fun, creative setting. All skill levels welcome!

Tuesday, October 22nd
1-3 p.m.
\$25/person

Owl Pen & Ink Sketches

Haliburton Kawartha Pine Ridge
District Health Unit



Learn to draw majestic owls with detailed pen and ink techniques. All skill levels welcome!

Wednesday, November 20th | 1-3 p.m.
\$25/person

Holiday Winter Birch Tree Acrylic Painting

Haliburton Kawartha Pine Ridge
District Health Unit



Join us to paint a serene winter birch tree scene in acrylic and enjoy a festive, creative experience!

Wednesday, December 18th
1-3 p.m.
\$25/person

Meet the Teacher!

Christine Benson



Christine Benson is a graduate of the Ontario College of Art & Design and the winner of several awards of distinction from OCAD for her work in the media of relief printmaking. She is the owner of Journey Through the Arts, a multi-faceted art school based in Port Hope. She has been teaching visual art for over 23 years to children, teens and adults in her log cabin studio as well as visiting school classrooms across Northumberland County. She is a practicing artist who has exhibited her work in galleries across Ontario. For more information about Christine please visit www.journeythroughthearts.com or check out Journey Through the Arts on Facebook.